





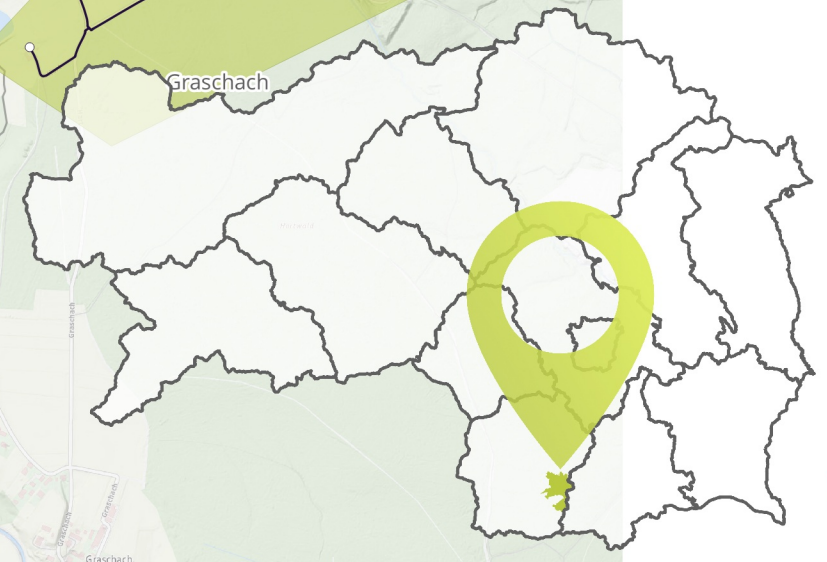
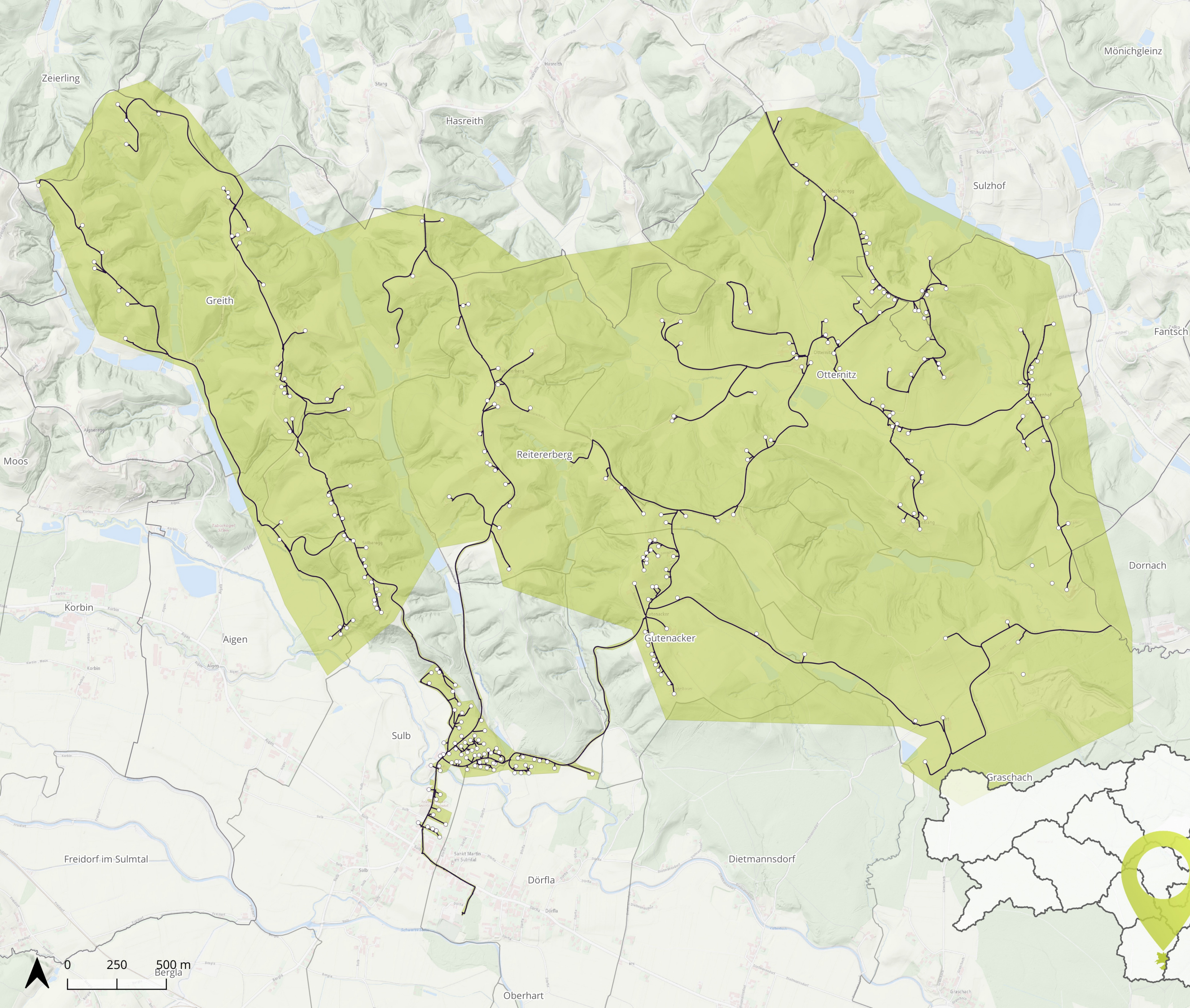


sbidi

Glasfaser vernetzt
mit der Zukunft

Ausbaugesbiet **St. Martin im Sulmtal Nord**

-  Gebäude
-  Trasse
-  Ausbaucuster
-  Katastralgemeindengrenze



Koordinatensystem
WGS 84, EPSG: 3857

Kartenerstellung
03.01.2024

Datenquellen
sbidi, basemap

