

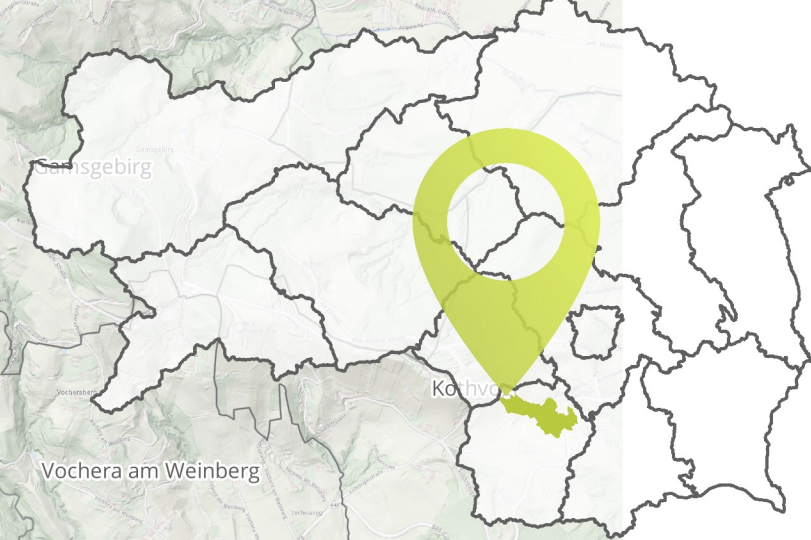
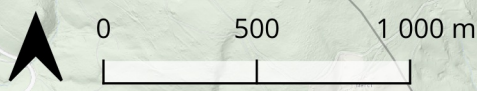
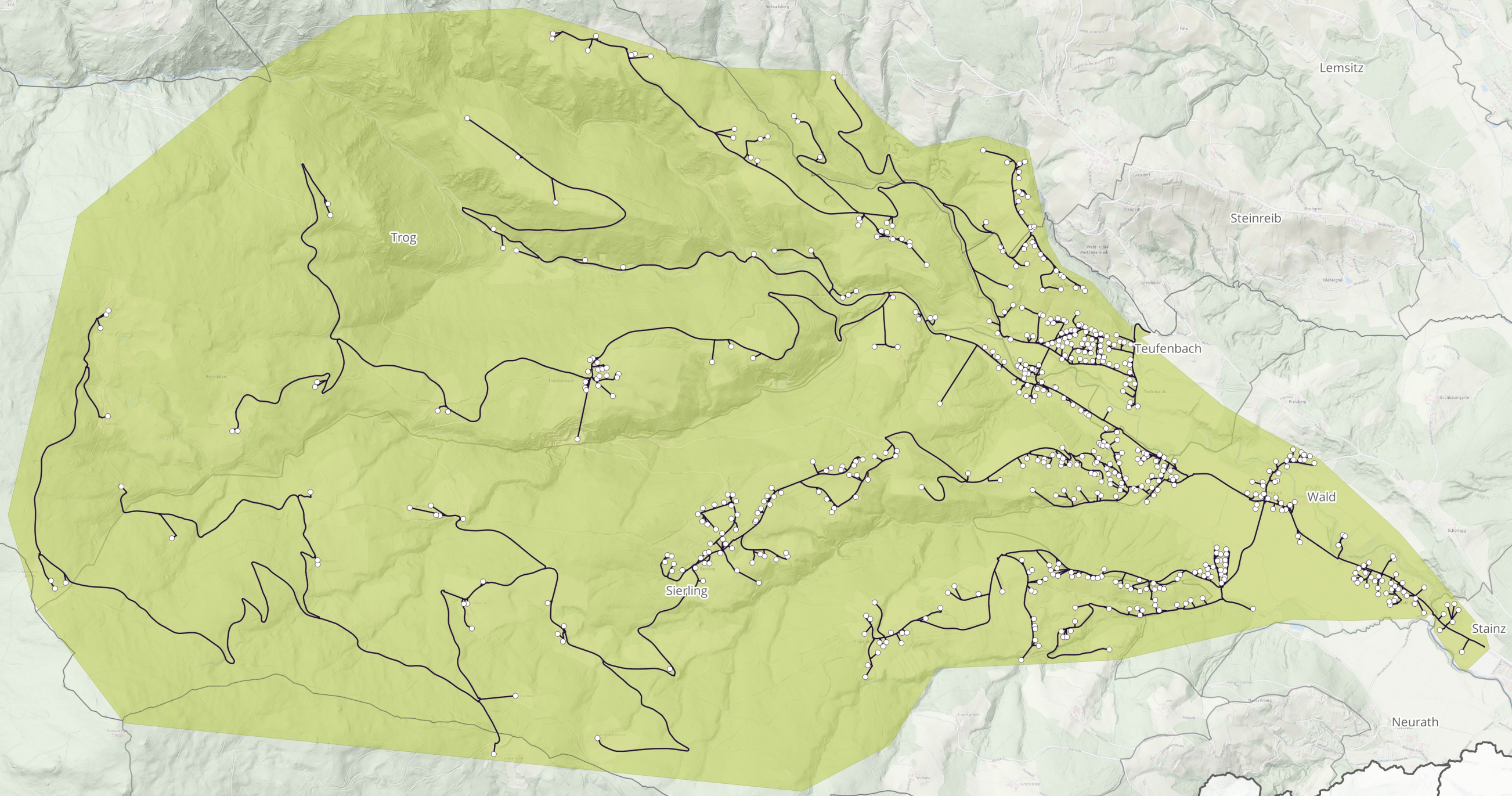
sbidi



Glasfaser vernetzt
mit der Zukunft

Ausbaugesbiet
Stainz West

- Gebäude
- Trasse
- Ausbaucuster
- Katastralgemeindegrenze



Koordinatensystem
WGS 84, EPSG: 3857

Kartenerstellung
03.01.2024

Datenquellen
sbidi, basemap

